



iPlanner Installation

Version 4.2
June 28, 2007

The information in this document is confidential and shall not be disclosed outside of Connect3 Systems, Inc. and its customers without express written permission from Connect3. The information shall not be duplicated, used or disclosed in whole or in part for any purpose other than that for which it was intended.

Connect3 Systems, Inc
11100 E. Artesia Blvd. Suite A

<http://www.connect3.com>
Cerritos, CA 90703

562.741.0380
info@connect3.com

TABLE OF CONTENTS

1	Introduction to iPlanner	1
2	Overview.....	2
2.1	Transferring Data to iPlanner	2
2.2	Batch Upload.....	2
2.3	Viewing iPlanner Results	2
3	Form Setup.....	3
3.1	Search Form.....	3
3.2	List View Form.....	3
4	Core Tables	4
5	Control Panel	5
6	Encryption Keys	6
7	iPlanner Web Application	7
7.1	Create iPlanner Directory.....	7
7.2	Load iPlanner Pool.....	7
7.3	Create Virtual Directory.....	8
7.4	Web Site Content Directory.....	8
7.5	Access Permissions	9
7.6	Directory Properties	9
7.6.1	Virtual Directory	9
7.6.2	Documents	10
8	.NET Framework	11
9	.NET Framework II	12
9.1	Assign Rights	12
9.2	Web Service Extensions	13
10	IIS Reset.....	14
11	MS DTC Settings.....	15
11.1	Enable MS DTC	15
11.2	Configuring MS DTC	16
12	Web.Config.....	18
13	Batch-Upload Config.....	22
14	Application Pool	24
15	Updating iPlanner	30
15.1	"iPlanner" Folder	30
15.1.1	Preserve "Web.Config"	30
15.1.2	Extract Files.....	30
15.1.3	Revise "Web.Config"	30
15.2	"bin" Folder.....	30
15.2.1	Unregister Services	30
15.2.2	Preserve "iPlannerBatchUploadProgram.exe.config"	31
15.2.3	Extract Files.....	31
15.2.4	Revise "iPlannerBatchUploadProgram.exe.config".....	31
15.2.5	Register Services	31
15.3	Stop, Start Application Pools.....	31
15.4	IISReset.....	32

1 Introduction to iPlanner

The optional iPlanner web application allows access to advertising vehicles in Promotion Manager at any Zone location with a high-speed Internet connection.

Ads can be selected and modified locally so they are better suited to the needs of each Zone. When a retail chain or co-op creates broad-based vehicles such as inserts, or vehicle components such as pages or individual ads, iPlanner is the ideal tool to allow Product and Price variations to be controlled locally.

When headquarters notifies the Zone locations that Events are available for review, a Zone location uses iPlanner to examine the Products assigned to its Zone, performs adjustments, and submits the changes to headquarters. Upon approval, the changes are stored in the Promotion Manager database.

NOTE: iPlanner can be configured with user IDs based on personal names, or with user IDs based on the Zone location when only one person at a Zone location uses iPlanner. In this document, "user" and "Zone location" are interchangeable.

NOTE: ONLY ACROBAT 6 or 8 SUPPORTED

Acrobat versions 6 or 8 must be used with iPlanner. Acrobat 7 versions are not supported and cause iPlanner to fail.

2 Overview

iPlanner requires two web applications: The iPlanner application that provides the user interface, and the Connect3 Web Application Server that manages the interaction between iPlanner and Promotion Manager. The Web Application Server must be installed first. See the separate document, "Application Server – Installation Guide."

2.1 Transferring Data to iPlanner

Promotion Manager separates data and images for iPlanner use, and the directory that holds images accompanying ads that originate from headquarters ("ItemImage") is referenced in a setting in the **Web.Config** file.

2.2 Batch Upload

Typically, the Batch Upload process is run when the deadline for Zone locations to submit their changes has been reached. The process uploads all Event data, whether or not it has been changed.

2.3 Viewing iPlanner Results

When Zone-location changes are transferred to Promotion Manager and finalized, completed pages can be reviewed in read-only mode in iPlanner. The pages are converted to .PDF format by the third-party page-layout application and deposited in another directory ("EventPDFPages") referenced in a setting in the **Web.Config** file.

3 Form Setup

iPlanner requires two form areas, which are configured using the Configuration Utility (VPMConfig.EXE) and its **Forms Maintenance** workspace. See the separate Document, "Configuration Manager – Administrator Guide."

3.1 Search Form

Create a new form area with an ID of 401 for the iPlanner search form.

Form Area ID	Form Area Name
401	IPlanner Search
402	IPlanner List View

Buttons: Add Form Area, Delete Form Area, Rename Form Area

The first column (field) requirement for this form is the "ProductID" field from the "Products" table. Click to check the box to activate its "Hidden" attribute.

The second column (field) requirement is the "ItemClassID" field from the "ItemMaster" table. Click to check the box to activate its "Hidden" attribute.

Other significant fields for display with the search results can be added according to site preferences.

3.2 List View Form

Create a new form area with an ID of 402 for the iPlanner **List View** tab workspace.

ITEMPOS	ITEMNAME	Price Format Name	itemclassname	Headline
2	0012200000911	Ad Retail	ITEM	WRIGLEY'S SREARMINT PTP
5	0013680014392	Ad Retail	ITEM	CORNR BSTRO PHYLY STK PANI
6	0014180029596	Ad Retail	ITEM	WELCH'S ORANGE PINEAPPLE APPLE
1	SEAPAK SHRIMP	Ad Retail - Save at Least	STYLE	Seapak Popcorn or Jumbo Butterfly Shrimp

This form is required to include fields from four tables.

- From the table "iPlannerBoxes," include the "ItemPos" field as column 1 and "ItemName" field as column 2.
- From the table "PriceFormat," include the field "PFormatName."
- From the table "ItemClass," include the field "ItemClassName."
- From the table "Copy," include at least one field.

4 Core Tables

The tables "Bases" and "Base_Item_Price" must be installed.

5 Control Panel

In the Control Panel, accessed via the Setup / Admin drop-down menu, five settings must be adjusted:

- **Output / General / Enable Base Table Output.** Select "ON." When this function is activated, the name of the file exported by Promotion Manager for the page layout application is constructed from the base table fields "EventName," "PageName," and "BICode," separated by underscores. When page assembly is complete, a .PDF file of the page can be generated by the page layout application, which, by default, will use the same name, plus the extension ".PDF".
- **Output / General / External Output Directory.** Enter the URL of the "FlashViewer" folder.
- **Output / General / External Product URL.** (Future functionality)
- **Output / General / External Output Events Directory.** Enter the name of the folder ("Ads") located below the "FlashViewer" folder. See "Output / General / External Output Directory" setting, above.
- **Proofing Manager / General / Comments Display.** If set to "All," all users can see the color indicators for Page Status. If set to "User Specific," only the user that changed the Page Status can view the color indicator.

Output / General / Enable Base Table Output, select "ON."

When this function is activated, the name of the file exported by Promotion Manager for the page layout application is constructed from the base table fields "EventName," "PageName," and "BICode," separated by underscores. When page assembly is complete, a .PDF file of the page can be generated by the page layout application, which, by default, will use the same name, plus the extension ".PDF".

6 Encryption Keys

iPlanner is enabled by installing special code, a password, and an encrypted key in the database. This is performed by a script supplied by Connect3 support.

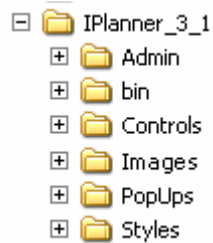
7 iPlanner Web Application

Install iPlanner on the same server that supports the Connect3 Web Application.

Verify that the iPlanner application has write permission for the "Images" folder.

7.1 Create iPlanner Directory

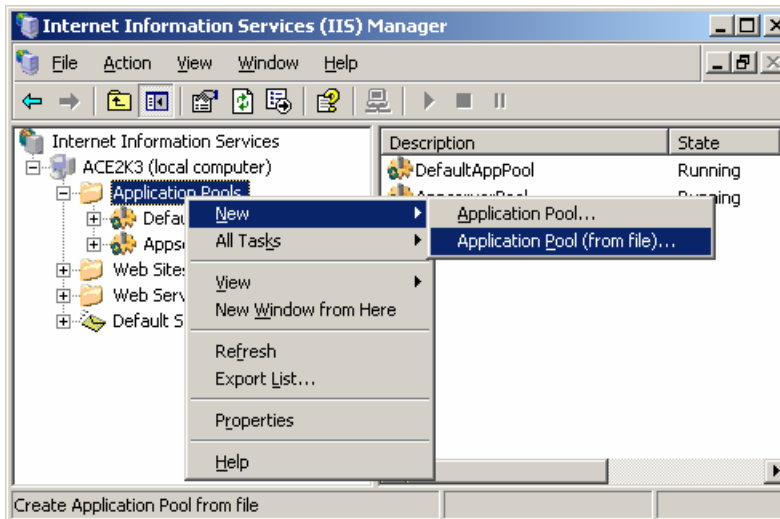
Create an iPlanner directory and extract the contents of **iPlanner.ZIP** to it. The extraction process creates six folders to hold the files: "Admin," "bin," "Controls," "Images," "PopUps," and "Styles."



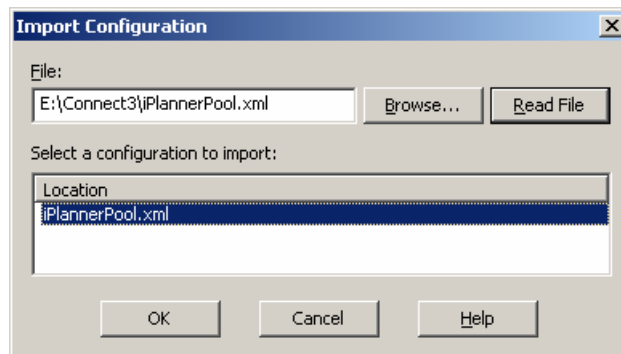
NOTE: A web.config file resides in the top folder ("IPlanner_3_1" in this example). Do not confuse this file with the "web.config" file that is used by the Connect3 Web Application.

7.2 Load iPlanner Pool

In the IIS navigation tree, right-click on the "Application Pools" heading to display a drop-down menu, then click on "New" to display another drop-down menu.



Click on the "Application Pool (from file)..." choice to display the "Import Configuration" window.



Click on the **Browse** button and navigate to the **..Connect3** folder that holds the files that were just unzipped.

- Navigate to "iPlannerPool.XML." Click to select it and redisplay the "Import Configuration" window.
- Click the **Read File** button.
- In the "Select a configuration to import:" panel, click to select "iPlannerPool," and click the **OK** button.

7.3 Create Virtual Directory

On the Internet server, go to Programs / Administrative Tools and launch "Internet Services Manager." Right-click on the "Default Website" field to display a drop-down menu, and click to select the "New Virtual Directory" choice.

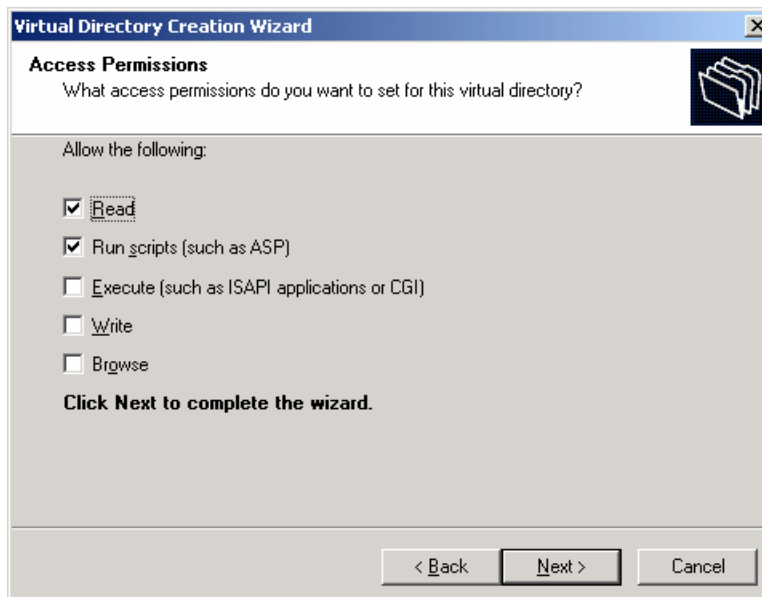
Right-click on "Default Websites" to display a drop-down menu, click on "New," and then click on "Virtual Directory" to display the "Virtual Directory Alias" window. Enter the name "iPlanner." Click the **Next** button to continue.

7.4 Web Site Content Directory

The virtual directory must be mapped to a physical directory. Click the **Browse** button and navigate to **<YourDrivePath>\Connect3\iPlanner**. Click to select it, and click the **Next** button.

7.5 Access Permissions

In the "Access Permissions" window, accept the default settings, "Read" and "Run scripts," by clicking the **Next** button.



When a "Success" window is displayed, click the **Finish** button.

7.6 Directory Properties

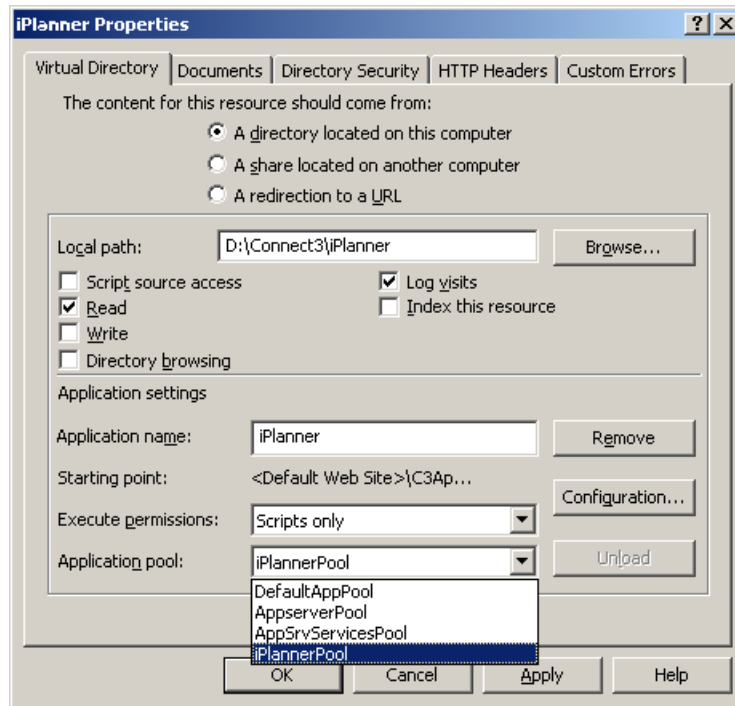
In the "Internet Services Manager's" **Tree** panel, right-click on the "iPlanner" virtual directory, and click to select "Properties" from the choices.

7.6.1 Virtual Directory

Click the **Virtual Directory** tab. The "Application Name" field is inactive (grayed out). Clicking the **Create** button creates an Application Name that matches the name of the virtual directory.

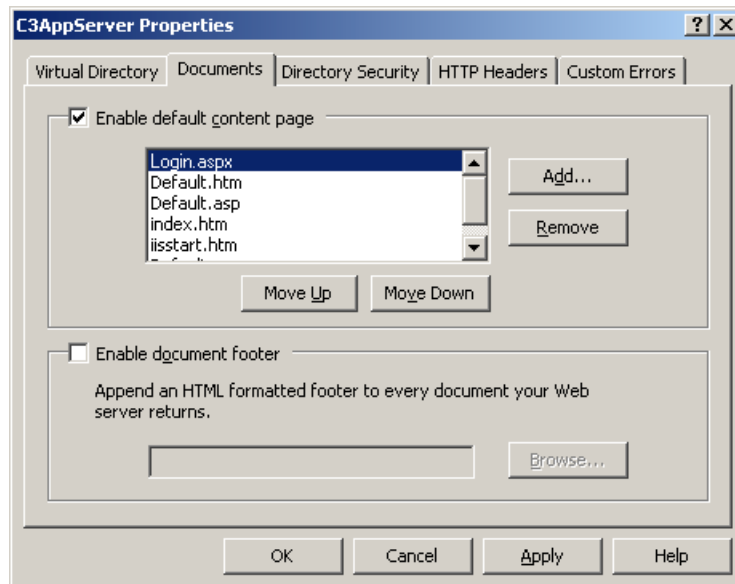
Click on the "Execute Permissions" field to display a drop-down menu, and click to select "Scripts Only" from the choices.

Click on the "Application Pool" field to display a drop-down menu, and click to select "iPlannerPool" from the choices.



7.6.2 Documents

Go to the **Documents** tab of "C3AppServerProperties" and click to check the box for "Enable Default Content Page."



Click the **Add** button to create a new default document. Enter the name "Login.aspx" and click the **OK** button.

Click to select "Login.aspx" and use the **Move Up** button to move it to the top of the panel. Click the **Apply** button and then the **OK** button.

8 .NET Framework

iPlanner is a browser-based service, which must run in a Microsoft .NET framework, version 1.1.4322, environment with IIS (Internet Information Services) version 6.0 or newer. For other requirements, see the "AMP Performance Series - Requirements and Reference" document.

9 .NET Framework II

On the web server, execute the following run line to create an "aspnet" account:

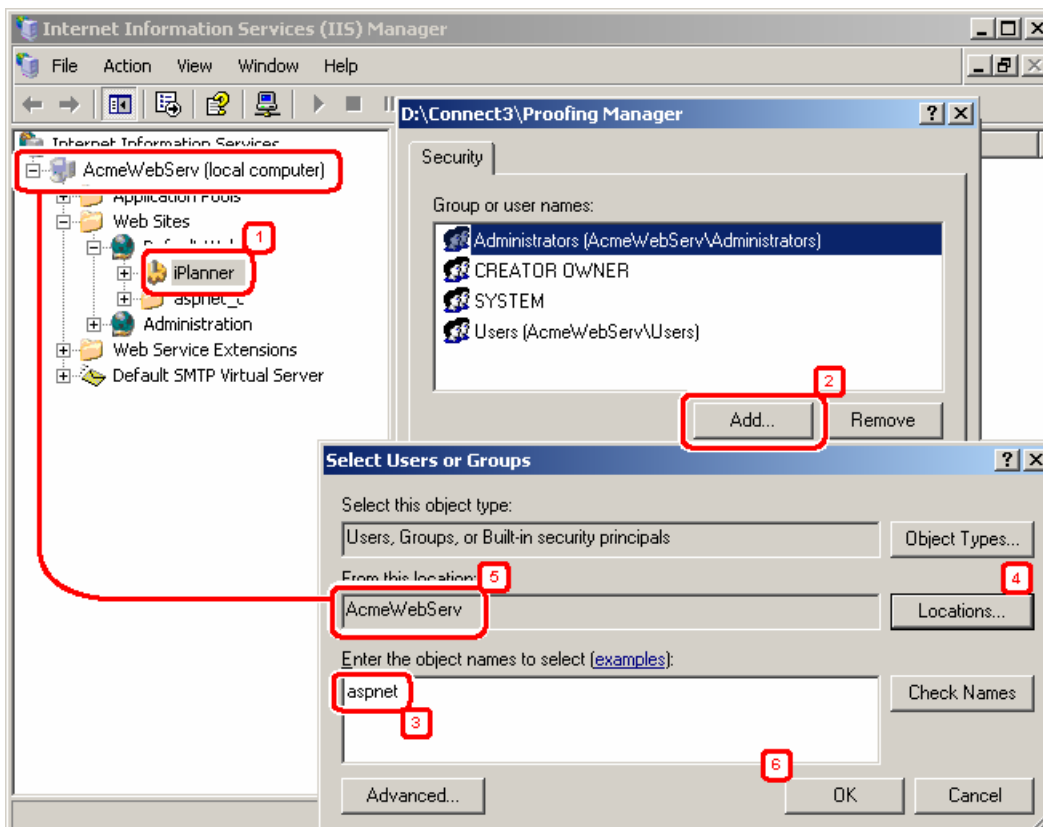
```
C:\windows\microsoft.net\framework\v1.1.4322\aspnet_regiis -i
```

Wait for the "Finished installing ASP.NET" message.

9.1 Assign Rights

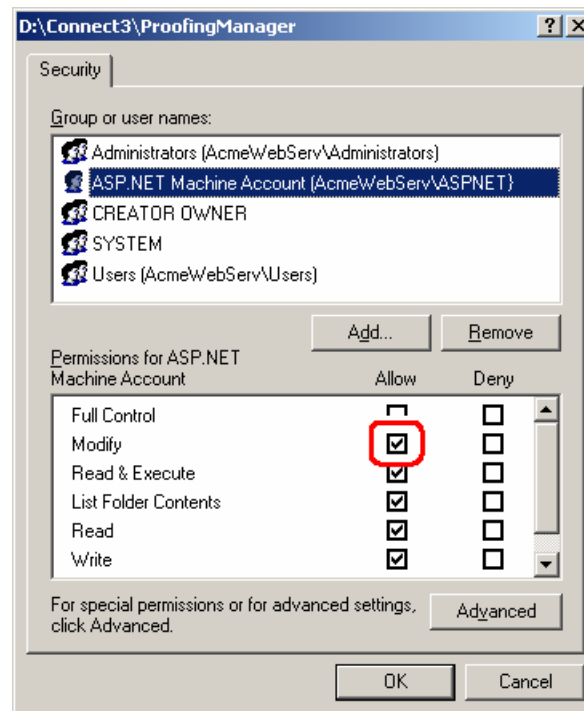
Open Internet Information Services (IIS).

1. Right-click on the "iPlanner" web site to display a drop-down menu and click on the "Permissions" choice to display a window with a single Security tab.
2. Click the **Add** button to display the "Select Users or Groups" window.
3. In the "Enter the object names..." panel, enter "aspnet."
4. Click the **Locations...** button.
5. Click to select the name of this server.
6. Click the **OK** button to close the "Select Users or Groups" window.



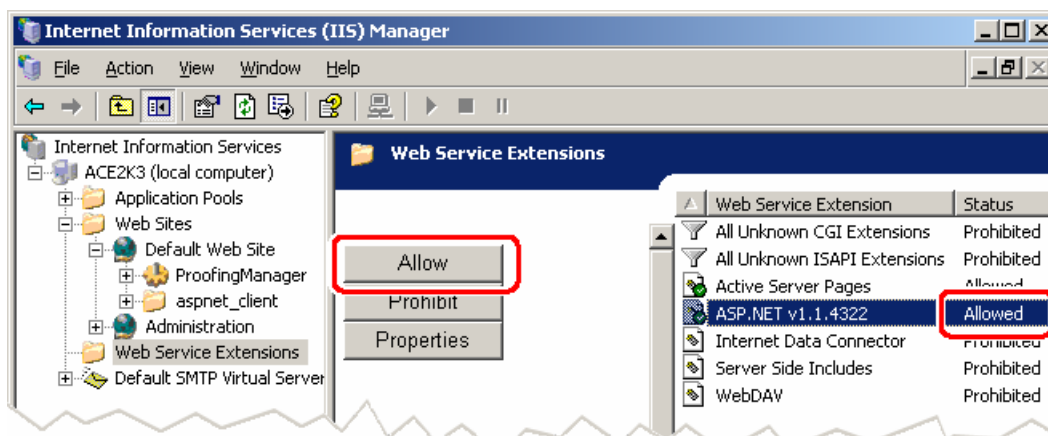
On the window with the **Security** tab, click to highlight "ASP.NET," and click to check "Modify."

Click the **OK** button.



9.2 Web Service Extensions

In the leftmost directory pane, click on the "Web Service Extensions" heading. In the rightmost pane, click "ASP.NET v1.1.4322" to select it. If its status setting is not "Allowed," click on the **Allow** button to change it.



10 IIS Reset

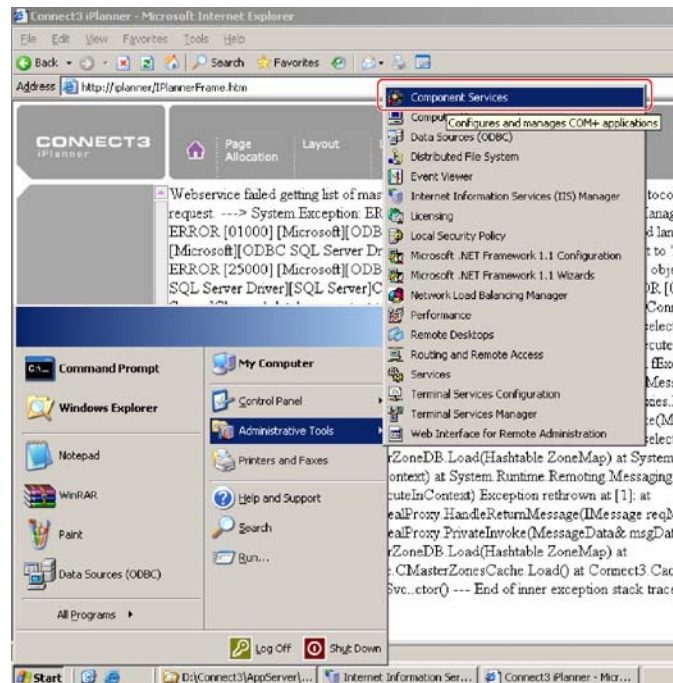
When first setting up a web site, or after making changes to IIS, a reset must be done to install the changes. Click on the Windows **Start** button to display a menu, and click on the "Run" choice. In the "Open" field, type "iisreset," and click the **OK** button.

11 MS DTC Settings

If web services are running in a Microsoft 2003 Server environment, MS DTC (Microsoft Distributed Transaction Coordinator) must be enabled with correct settings. Check the webservice server to verify that MS DTC is enabled, otherwise enable it.

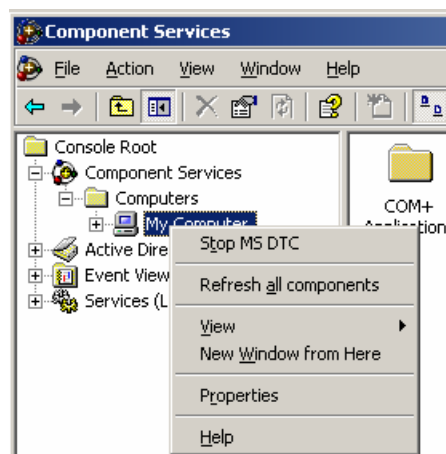
11.1 Enable MS DTC

From the "Start" menu, click on "Administrative Tools" to display a drop-down menu, and click to select the "Component Services" choice.



In the "Component Services" window, right-click on the "My Computer" heading to display a drop-down menu.

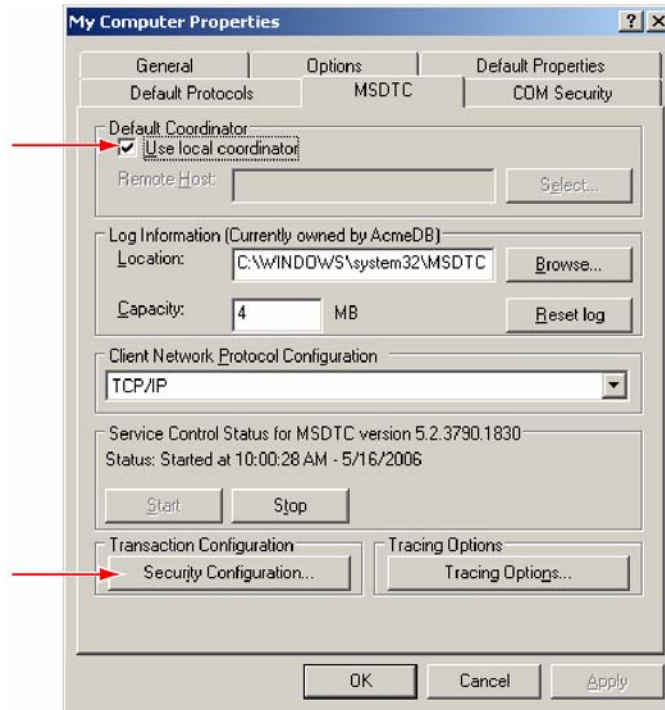
The first choice is "Start MSDTC" if the process is not enabled, or "Stop MSDTC" if it is enabled. If the service is not enabled, click the choice to start it.



11.2 Configuring MS DTC

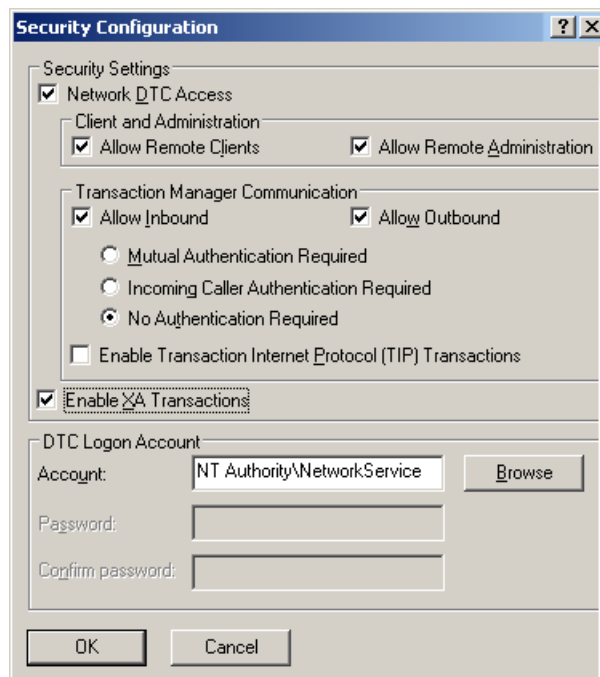
From the same drop-down menu, click the "Properties" choice. Click the "MSDTC" tab to display its workspace.

Click to check "Use local coordinator."



Click the **Security Configuration ...** button to display its workspace. If necessary, click the boxes to check:

- Network DTC access
- Allow Remote Clients
- Allow Remote Administration
- Allow Inbound
- Allow Outbound
- Enable XA Transactions



Click the **OK** button on the "Security Configuration" window.

On the "My Computer Properties" window, click on the **Options** tab. In the "Transaction Timeout" field, enter **3600**. Click the **Apply** button.

Click the **OK** button on the "My Computer Properties" window.

If any settings were changed, stop and start the MS DTC service. See

["Enable MS DTC"](#)

Under some circumstances, the stop and start may be insufficient and the web server may have to be rebooted.

12 Web.Config

The web.CONFIG file is a set of XML statements that establish site-specific settings for iPlanner. The file can be modified using a simple text editor such as Notepad.

Level 1 and 2 Tags	Level 3 Tags	Level 4 Tags	Description
<code><configuration></code>			Begin tag.
<code><system.web></code>			Begin tag, configuration elements for ASP.NET runtime environment.
	<code><compilation</code>		Begin tag.
		<code>default language="C#" /></code>	Compiler settings
		<code>debug="false" /></code>	
	<code><authentication mode="Forms"</code>		
		<code><forms name="iPlanner"</code>	Defines the name of the cookie that transmits login information from the client.
		<code>path= "/"</code>	Defines the path to the cookie's location.
		<code>login url="login.aspx"</code>	Defines login page displayed after timeout.
		<code>protection="All"</code>	Protects login info file data.
		<code>timeout="20"></code>	Delay in minutes before inactivity timeout.
		<code></forms></code>	End tag.
	<code></authentication</code>		End tag.
	<code><authorization></code>		Begin tag.
		<code><deny users="?" /></code>	Disallows anonymous or non-authenticated logins.
	<code><httpRuntime executionTimeout="3600" /></code>		Maximum time allowed for a web services function to finish executing, in seconds (3600=1 hour).
	<code><pages buffer="true" enableSessionState="true" enableViewState="true" enableViewStateMac="true" autoEventWireUp="true" validateRequest="false" /> <customErrorsMode="Off" /></code>		Required ASP.NET settings.
	<code><sessionstate mode="InProc" ConnectionString="tcpip=127.0.0.1:42424" <sqlConnectionString="data source=127.0.0.1;Trusted_Connection=yes" cookieless="false" timeout="20" /></code>		By default, ASP.NET uses cookies to identify which requests belong to a particular session. If cookies are not available, a session can be tracked by adding a session identifier to the URL. To disable cookies, set <code>cookieless="true"</code> . "Timeout" is expressed in seconds.
<code></system.web></code>			End tag.
<code><appSettings></code>			Begin tag, iPlanner configuration elements.
	<code><add key="driverfamily" value="XXXMSSQL" /> <add key="driverfamily" value="XXXOracle" /></code>		Defines the database driver environment. For "XXX," substitute the site name. Delete "SQL" or "Oracle" as appropriate.

Level 1 and 2 Tags	Level 3 Tags	Level 4 Tags	Description
	<add key="AcmeMSSql" value="Password=XXXXX;UserID=AcmeUser;Initial Catalog=Acme_DB; DataSource=AcmeServer" </add>		Identification and logon details for database connection.
	<add key="ImagePhysicalPath" value="\\YourServer\E\Your_Directory\iPlanner\Images" </add>		Full UNC path to ...iPlanner\Images
	<add key="ItemImage" value="ItemImage" </add>		Name of the folder in ...iPlanner\Images where images from Promotion Manager pages are placed so they are visible on pages retrieved by Zone locations.
	<add key="UserImages" value="UserImages" </add>		Name of the folder in ...iPlanner\Images where images that originate from the local Zone are deposited so they can be used on iPlanner Event Pages. Once iPlanner changes are completed, an administrator uses the "Move User Images" procedure to transfer images from this location to the image folders used by Promotion Manager.
	<add key="EventPDFPages" value="PageImages" </add>		Name of the folder in ...iPlanner\Images containing PDF files of completed pages created in Promotion Manager that can be retrieved using iPlanner for (read-only) review. This folder contains subfolders named the same as each Event, and follows this structure: Pageimages\EventName\EventName_PageName_PMVersion.PDF (Images appearing on these pages are stored separately, see "ItemImage.")
	<add key="DIGIT_PATH2 value="2" </add>		Matches values in the Promotion Manager Control Panel defining the number of characters in an image file name that generate the directory structure for images. NOTE: Requires that image file names have no spaces.
	<add key="DIGIT_PATH3 value="3" </add>		
	<add key="PM_HiRes" value="\\YourServer\E\Your_Directory\Graphics\HI_RES" </add>		Matches the setting in Promotion Manager's Control Panel for "High Resolution Directory"; the Promotion Manager directory where subfolders are created to hold high-resolution images, with names based on the digit path settings.
	<add key="PMLoRes" value="MacVol1:Production:LowRes" </add>		Matches the setting in Promotion Manager's Control Panel for "Low Resolution Directory"; the Promotion Manager Macintosh directory holding low-resolution images.
	<add key="AllowedToMakeDirectories" value="Yes" </add>		"Yes" allows the web site to create image directories. The default is "Yes."
	<add key="UserToStoreCount" value="1" </add>		Defines the maximum number of Zones that can be assigned to a user. "*" means "unlimited."
	<add key="ValidImageExtensions" value="jpg,jpeg,gif,png" </add>		Allowable file-name extensions for images. Comma-delimited
	<add key="GalleryImageWidth" value="106" </add>		Width of the images used in "Allocate."
	<add key="GalleryImageHeight" value="86" </add>		Height of the images used in "Allocate."
	<add key="WebsiteVirtualPath" value="iPlanner" </add>		Virtual path to the web site location.
	<add key="StartOverFlag" value="Yes" </add>		"Yes" causes a "Start Over" button to be displayed in the Layout workspace.

Level 1 and 2 Tags	Level 3 Tags	Level 4 Tags	Description
	<add key="GalleryAdjustPageCntFlag" value="No"></add>		Future functionality. Do not change.
	<add key="StopPricingImport" value="Yes"> </add>		If set to "Yes," iPlanner updates Promotion Manager's "StopPricingImport" table, turning off the importation of Offer and Event pricing.
	<add key="NonReplacingPriceFormats" value="###,###,###"> </add>		Price Format IDs that do not allow Product replacement. The ID numbers are found in the Promotion Manager PriceFormatID table. Comma-delimited.
	<add key="DefaultPriceFormat" value="###"> </add>		Default Price Format ID for added Products.
	<add key="DefaultItemFormat" value="###"> </add>		Default Item Format ID for added Products.
	<add key="AllowSelectingItemFormats" value="No" </add>		"Yes" allows Item Formats to be selected for new Products.
	<add key="AllowSelectingPriceFormats" value="No"></add>		"Yes" allows Price Formats to be selected for new Products.
	<add key="ItemFormats" value="###,###,###"> </add>		Defines available Item Formats.
	<add key="PriceFormats" value="###,###,###"> </add>		Defines available Price Formats.
	<add key="UseDefaultsWhenReplacing" value="No" </add>		"Yes" applies the default Item and Price formats to a Product that is replacing another Product. "No" uses the formats for the Product being replaced.
	<add key="DrawPageSvcTimeOut" value="3600000"> </add>		Maximum wait time for transactions between iPlanner and the WebApp server, in milliseconds (3600000 = 1 hour).
	<add key="LogFilePath" value="X:\ErrorLog"> </add>		Defines a folder where error messages are deposited.
	<add key="CompanyName" value="Acme Corp."> </add>		Text string appearing on the "Welcome" page that identifies the parent company hosting iPlanner; may appear on other pages.
	<add key="CompanyLogo" value="C:\MyImages\MyLogos\logo.gif"> </add>		Full UNC path to a graphic appearing on the "Welcome" page that identifies the parent company hosting iPlanner, may appear on other pages.
	<add key="CompanySupportPerson" value="Call John Doe"> </add>		Text string appearing on the "Welcome" page that identifies the name or department to call for support of iPlanner; may appear on other pages.
	<add key=""CompanySupportPhone" value="555-555-1212"> </add>		Text string appearing on the "Welcome" page that displays the phone number to call for support of iPlanner; may appear on other pages.
	<add key="TurnOffLayout" value="False"/>		If set to "True," the Layout workspace is not available.
	<add key="IPlanner.DrawPagesvc.DrawPageSvc" value="http://Acmehost/AppServer/Services/DrawPagesvc.aspx"/>		Defines calls from iPlanner to web service functions.
	<add key="IPlanner.DrawThumbnailSvc.CDrawThumbnailSvc" value="http://Acmehost/AppServer/Services/DrawThumbnailSvc.aspx"/>		
	<add key="IPlanner.GalleryPagesSvc.GalleryPagesSvc" value="http://Acmehost/AppServer/Services/gallerypagesvc.aspx"/>		

Level 1 and 2 Tags	Level 3 Tags	Level 4 Tags	Description
	<add key="IPlanner.GetEventsSvc.GetEventsSvc" value="http://Acmehost/AppServer/Services/GetEventsSvc.aspx"/>		
	<add key="IPlanner.MasterVersionSvc.CMasterVersionSvc" value="http://Acmehost/AppServer/Services/MasterVersionSvc.aspx"/>		
	<add key="IPlanner.ExpandStoreSetSvc.CExpandStoreSetSvc" value="http://Acmehost/AppServer/Services/ExpandStoreSetSvc.aspx"/>		
</appSettings>			End tag.
<configuration>			End tag.

13 Batch-Upload Config

The batch upload process is run at a time when no Zone locations are using iPlanner, such as overnight. It transfers changes made in iPlanner to Promotion Manager's workspaces and "shuts down" iPlanner, locking all Event Pages so they can no longer be changed in iPlanner. (However, an administrator can grant a one-time login with full functionality to specific Zone locations by giving them a bypass "code," or password.)

See the "Enter iPlanner Code" topic in the "iPlanner – Administrator Guide" document.

The upload is performed by running the **IPannerBatchUploadProgram.EXE** application. This application obtains site-specific settings from the **IPannerBatchUploadProgram.exe.CONFIG** file. The config file is a set of XML statements that can be modified using a simple text editor such as Notepad.

Level 1 and 2 Tags	Level 3 Tags	Level 4 Tags	Description
<configuration>			Begin tag.
<appSettings>			Begin tag, Workflow configuration elements.
	<add key="Creator" value="SiteAtavar" />		Database creator ID.
	<add key="ConnectionString" value="DSN=SiteServer;database=" />		Name of the iPlanner database server.
	<add key="Database" value="AcmeDatabase;" />		Name of the iPlanner database.
	<add key="CaseSensitive" value="No" />		
	<add key="DBDriver" value="0" />		0 = ODBC, 1= SQL, 2 = Oracle, 3 = DataDirect.
	<add key="Rdbms" value="sql" />		Required so the application can access the database server.
	<add key="UID" value="SiteAdmin" />		ID for database login
	<add key="Password" value="XXXXXX" />		Password for the UID users
	<add key="LogfilePath" value="X:\ErrorLog" />		UNC path to a folder where iPlanner creates log files; batch upload errors are sent here. This value must match the "LogfilePath" setting in the AppServer Web.CONFIG file.
	<add key="Mode" value="Development" />		If set to "Development," the application window for the batch upload process remains open when the process completes. If missing, left blank or changed to anything else, the window is closed on completion.
	<add key="Error" value="StackTrace" />		If set to "StackTrace," batch upload errors also generate stack trace files in the "LogfilePath" folder, in addition to log files. If missing, left blank or changed to anything else, no stack trace files are generated.
	<add key="ApplicationName" value="IPannerBatchUploadProgram" />		This value must match the name of the batch upload .EXE file and the name of its .exe.CONFIG file.
	<add key="Application Type" value="Console" />		Identifies call type.
	<add key="ProcessName" value="IPannerUpload" />		<ul style="list-style-type: none"> • If set to "IPannerUpload," transfers changes made in iPlanner to Promotion Manager's workspaces. • If set to "UpdateIPannerPages," a one-time update is performed to update iPlanner tables to version 3.5.

Level 1 and 2 Tags	Level 3 Tags	Level 4 Tags	Description
		<add key="CopyCacheSize" value="50"/>	Defines the maximum number of copy records held in memory.
		<add key="CopyTimeDuration" value="1"/>	Defines the maximum duration, in minutes, that copy records can be held in memory.
		<add key="CopyTimeInterval" value="1"/>	Defines the interval, in minutes, that copy memory is purged.
		<add key="ProductCacheSize" value="50"/>	Defines the maximum number of Product records held in memory.
		<add key="ProductTimeDuration" value="1"/>	Defines the maximum duration, in minutes, that Product records can be held in memory.
		<add key="ProductTimeInterval" value="1"/>	Defines the interval, in minutes, that Product memory is purged.
		</appSettings>	End tag.
		</configuration>	End tag.

iPlannerPool.xml	Notes
AspBufferingLimit="4194304"	
AspBufferingOn="TRUE"	
AspCalcLineNumber="TRUE"	
AspCodepage="0"	
AspDiskTemplateCacheDirectory="%windir%\system32\inetsrv\ASP Compiled Templates"	
AspEnableApplicationRestart="TRUE"	
AspEnableAspHtmlFallback="FALSE"	
AspEnableChunkedEncoding="TRUE"	
AspEnableParentPaths="FALSE"	
AspEnableTypelibCache="TRUE"	
AspErrorsToNTLog="FALSE"	
AspExceptionCatchEnable="TRUE"	
AspExecuteInMTA="0"	
AspKeepSessionIDSecure="0"	
AspLCID="2048"	
AspLogErrorRequests="TRUE"	
AspMaxDiskTemplateCacheFiles="2000"	
AspMaxRequestEntityAllowed="204800"	
AspProcessorThreadMax="25"	
AspQueueConnectionTestTime="3"	
AspQueueTimeout="4294967295"	
AspRequestQueueMax="3000"	
AspRunOnEndAnonymously="TRUE"	
AspScriptEngineCacheMax="250"	
AspScriptErrorMessage="An error occurred on the server when processing the URL. Please contact the system administrator."	
AspScriptErrorSentToBrowser="TRUE"	
AspScriptFileCacheSize="500"	
AspScriptLanguage="VBScript"	
AspScriptTimeout="90"	
AspSessionMax="4294967295"	
AspSessionTimeout="20"	
AspTrackThreadingModel="FALSE"	
AuthChangeURL="/iisadmpwd/achg.asp"	
AuthExpiredURL="/iisadmpwd/aexp.asp"	
AuthExpiredUnsecureURL="/iisadmpwd/aexp3.asp"	
AuthFlags="AuthAnonymous"	
AuthNotifyPwdExpURL="/iisadmpwd/annot.asp"	
AuthNotifyPwdExpUnsecureURL="/iisadmpwd/annot3.asp"	
CGITimeout="300"	
CPUlimit="0"	

iPlannerPool.xml	Notes
	CPUResetInterval="5"
	CacheSAPI="TRUE"
	ConnectionTimeout="120"
	ContentIndexed="TRUE"
	DefaultDoc="Default.htm,Default.asp,index.htm,Default.aspx"
	DirBrowseFlags="DirBrowseShowDate DirBrowseShowTime DirBrowseShowSize DirBrowseShowExtension DirBrowseShowLongDate EnableDefaultDoc"
	DisallowOverlappingRotation="FALSE"
	DisallowRotationOnConfigChange="FALSE"
	DownlevelAdminInstance="1"
	HttpCustomHeaders="X-Powered-By: ASP.NET"

iPlannerPool.xml	Notes
	<pre> HttpErrors= "400,*",FILE,C:\WINDOWS\help\iisHelp\common\400.htm 401,1,FILE,C:\WINDOWS\help\iisHelp\common\401-1.htm 401,2,FILE,C:\WINDOWS\help\iisHelp\common\401-2.htm 401,3,FILE,C:\WINDOWS\help\iisHelp\common\401-3.htm 401,4,FILE,C:\WINDOWS\help\iisHelp\common\401-4.htm 401,5,FILE,C:\WINDOWS\help\iisHelp\common\401-5.htm 401,7,FILE,C:\WINDOWS\help\iisHelp\common\401-1.htm 403,1,FILE,C:\WINDOWS\help\iisHelp\common\403-1.htm 403,2,FILE,C:\WINDOWS\help\iisHelp\common\403-2.htm 403,3,FILE,C:\WINDOWS\help\iisHelp\common\403-3.htm 403,4,FILE,C:\WINDOWS\help\iisHelp\common\403-4.htm 403,5,FILE,C:\WINDOWS\help\iisHelp\common\403-5.htm 403,6,FILE,C:\WINDOWS\help\iisHelp\common\403-6.htm 403,7,FILE,C:\WINDOWS\help\iisHelp\common\403-7.htm 403,8,FILE,C:\WINDOWS\help\iisHelp\common\403-8.htm 403,9,FILE,C:\WINDOWS\help\iisHelp\common\403-9.htm 403,10,FILE,C:\WINDOWS\help\iisHelp\common\403-10.htm 403,11,FILE,C:\WINDOWS\help\iisHelp\common\403-11.htm 403,12,FILE,C:\WINDOWS\help\iisHelp\common\403-12.htm 403,13,FILE,C:\WINDOWS\help\iisHelp\common\403-13.htm 403,15,FILE,C:\WINDOWS\help\iisHelp\common\403-15.htm 403,16,FILE,C:\WINDOWS\help\iisHelp\common\403-16.htm 403,17,FILE,C:\WINDOWS\help\iisHelp\common\403-17.htm 403,18,FILE,C:\WINDOWS\help\iisHelp\common\403.htm 403,19,FILE,C:\WINDOWS\help\iisHelp\common\403.htm 403,20,FILE,C:\WINDOWS\help\iisHelp\common\403-20.htm 404,*",FILE,C:\WINDOWS\help\iisHelp\common\404b.htm 404,2,FILE,C:\WINDOWS\help\iisHelp\common\404b.htm 404,3,FILE,C:\WINDOWS\help\iisHelp\common\404b.htm 405,*",FILE,C:\WINDOWS\help\iisHelp\common\405.htm 406,*",FILE,C:\WINDOWS\help\iisHelp\common\406.htm 407,*",FILE,C:\WINDOWS\help\iisHelp\common\407.htm 412,*",FILE,C:\WINDOWS\help\iisHelp\common\412.htm 414,*",FILE,C:\WINDOWS\help\iisHelp\common\414.htm 415,*",FILE,C:\WINDOWS\help\iisHelp\common\415.htm 500,12,FILE,C:\WINDOWS\help\iisHelp\common\500-12.htm 500,13,FILE,C:\WINDOWS\help\iisHelp\common\500-13.htm 500,15,FILE,C:\WINDOWS\help\iisHelp\common\500-15.htm 500,16,FILE,C:\WINDOWS\help\iisHelp\common\500.htm 500,17,FILE,C:\WINDOWS\help\iisHelp\common\500.htm 500,18,FILE,C:\WINDOWS\help\iisHelp\common\500.htm 500,19,FILE,C:\WINDOWS\help\iisHelp\common\500.htm" </pre>
	IdleTimeout="20"

iPlannerPool.xml	Notes
	InProcessIsapiApps="C:\WINDOWS\system32\inetrv\httpext.dll C:\WINDOWS\system32\inetrv\httpodbc.dll C:\WINDOWS\system32\inetrv\ssinc.dll C:\WINDOWS\system32\msw3prt.dll C:\WINDOWS\Microsoft.NET\Framework\v1.1.4322\aspnet_isapi.dll"
	LoadBalancerCapabilities="2"
	LogEventOnRecycle="AppPoolRecycleTime AppPoolRecycleMemory AppPoolRecyclePrivateMemory"
	LogExtFileFlags="LogExtFileDate LogExtFileTime LogExtFileClientIp LogExtFileUserName LogExtFileSiteName LogExtFileServerIp LogExtFileMethod LogExtFileUriStem LogExtFileUriQuery LogExtFileHttpStatus LogExtFileWin32Status LogExtFileServerPort LogExtFileUserAgent LogExtFileHttpSubStatus"
	LogFileDirectory="C:\WINDOWS\system32\LogFiles"
	LogFilePeriod="1"
	LogFileTruncateSize="20971520"
	LogOdbcDataSource="HTTPLOG"
	LogOdbcPassword="49634462600000001200000040000000ee1cb6ba7633c4a1f53ca2069e43fd4cdd206f006c0075006d00650032005c00570049004e0044004f00570053005c00730079007300740065006d00330032005c006d0006d0063002e006500780065000000078dc927c5b09"
	LogOdbcTableName="InternetLog"
	LogOdbcUserName="InternetAdmin"
	LogPluginClsid="{FF160663-DE82-11CF-BC0A-00AA006111E0}"
	LogType="1"
	MaxBandwidth="4294967295"
	MaxConnections="4294967295"
	MaxProcesses="1"
	MinFileBytesPerSec="240"
	OrphanWorkerProcess="FALSE"
	PasswordChangeFlags="AuthChangeDisable AuthAdvNotifyDisable"
	PeriodicRestartMemory="0"
	PeriodicRestartPrivateMemory="0"
	PeriodicRestartRequests="0"
	PeriodicRestartTime="1740"
	PingInterval="30"
	PingResponseTime="90"
	PingingEnabled="TRUE"
	RapidFailProtection="TRUE"
	RapidFailProtectionInterval="5"
	RapidFailProtectionMaxCrashes="5"
	SMPAffinitized="FALSE"
	SMPPProcessorAffinityMask="4294967295"

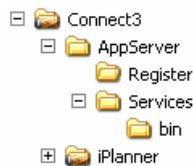
iPlannerPool.xml	Notes
ScriptMaps=".asp,C:\WINDOWS\system32\inetrv\asp.dll,5,GET,HEAD,POST,TRACE .cer,C:\WINDOWS\system32\inetrv\asp.dll,5,GET,HEAD,POST,TRACE .cdx,C:\WINDOWS\system32\inetrv\asp.dll,5,GET,HEAD,POST,TRACE .asa,C:\WINDOWS\system32\inetrv\asp.dll,5,GET,HEAD,POST,TRACE .idc,C:\WINDOWS\system32\inetrv\httpodbc.dll,5,GET,POST .shtm,C:\WINDOWS\system32\inetrv\ssinc.dll,5,GET,POST .shtml,C:\WINDOWS\system32\inetrv\ssinc.dll,5,GET,POST .stm,C:\WINDOWS\system32\inetrv\ssinc.dll,5,GET,POST .asax,C:\WINDOWS\Microsoft.NET\Framework\v1.1.4322\aspnet_isapi.dll,5,GET,HEAD,POST,DEBUG .ascx,C:\WINDOWS\Microsoft.NET\Framework\v1.1.4322\aspnet_isapi.dll,5,GET,HEAD,POST,DEBUG .ashx,C:\WINDOWS\Microsoft.NET\Framework\v1.1.4322\aspnet_isapi.dll,1,GET,HEAD,POST,DEBUG .asmx,C:\WINDOWS\Microsoft.NET\Framework\v1.1.4322\aspnet_isapi.dll,1,GET,HEAD,POST,DEBUG .aspx,C:\WINDOWS\Microsoft.NET\Framework\v1.1.4322\aspnet_isapi.dll,1,GET,HEAD,POST,DEBUG .axd,C:\WINDOWS\Microsoft.NET\Framework\v1.1.4322\aspnet_isapi.dll,1,GET,HEAD,POST,DEBUG .vsdisco,C:\WINDOWS\Microsoft.NET\Framework\v1.1.4322\aspnet_isapi.dll,1,GET,HEAD,POST,DEBUG .rem,C:\WINDOWS\Microsoft.NET\Framework\v1.1.4322\aspnet_isapi.dll,1,GET,HEAD,POST,DEBUG .soap,C:\WINDOWS\Microsoft.NET\Framework\v1.1.4322\aspnet_isapi.dll,1,GET,HEAD,POST,DEBUG .config,C:\WINDOWS\Microsoft.NET\Framework\v1.1.4322\aspnet_isapi.dll,5,GET,HEAD,POST,DEBUG .cs,C:\WINDOWS\Microsoft.NET\Framework\v1.1.4322\aspnet_isapi.dll,5,GET,HEAD,POST,DEBUG .csproj,C:\WINDOWS\Microsoft.NET\Framework\v1.1.4322\aspnet_isapi.dll,5,GET,HEAD,POST,DEBUG .vb,C:\WINDOWS\Microsoft.NET\Framework\v1.1.4322\aspnet_isapi.dll,5,GET,HEAD,POST,DEBUG .vbproj,C:\WINDOWS\Microsoft.NET\Framework\v1.1.4322\aspnet_isapi.dll,5,GET,HEAD,POST,DEBUG .webinfo,C:\WINDOWS\Microsoft.NET\Framework\v1.1.4322\aspnet_isapi.dll,5,GET,HEAD,POST,DEBUG .licx,C:\WINDOWS\Microsoft.NET\Framework\v1.1.4322\aspnet_isapi.dll,5,GET,HEAD,POST,DEBUG .resx,C:\WINDOWS\Microsoft.NET\Framework\v1.1.4322\aspnet_isapi.dll,5,GET,HEAD,POST,DEBUG .resources,C:\WINDOWS\Microsoft.NET\Framework\v1.1.4322\aspnet_isapi.dll,5,GET,HEAD,POST,DEBUG"	
ShutdownTimeLimit="90"	
StartupTimeLimit="90"	
WAMUserName="IWAM_XXX"	"XXX" = Server name
WAMUserPass="49634462700000002200000040000000ee1cb6ba6a3397a1b33c8b06b543a94c97207b920ee7 aea5f9abf5a3b5e28a3b1f8b00000100010071a8dbf4c6141e4a95a1fbce7860aef02000000000000000000 000000000000000000000000000000100000000000004c4d454d6800000b0dc150000000000">	
</IISInheritedProperties>	end tag
</MBProperty>	end tag
</configuration>	end tag

15 Updating iPlanner

When the iPlanner server application is updated, revisions are issued as compressed .ZIP files available from the Connect3 FTP site.

Download **iPlanner_4.2.ZIP** and deposit it in the "iPlanner" folder.

Download **bin_4.2.ZIP** and deposit it in the "bin" folder.



15.1 "iPlanner" Folder

If there are no changes to the "iPlanner" folder, go to the "bin" folder topic:

["bin" Folder](#)

15.1.1 Preserve "Web.Config"

A **Web.config** file resides in the existing **iPlanner** folder. This file holds site-specific customizations and must be preserved by copying or moving it to a folder other than **iPlanner**.

15.1.2 Extract Files

Right-click on **iPlanner_4.2.ZIP** to display a drop-down menu and click the "Extract Here" option to launch decompression of the files.

15.1.3 Revise "Web.Config"

Consult the "Release Notes" or "ReadMe - Technical Bulletin" for the general Connect3 release, and check for changes to the iPlanner **Web.config** file. Using a simple text editor such as Notepad, open the saved **Web.config** file and modify it to incorporate the described changes, while preserving customized site settings.

Copy or move the revised Web.config file to its original location in the **iPlanner** folder, replacing the generic **Web.config** file there that came from the .ZIP update file.

15.2 "bin" Folder

If there are no changes to the "bin" folder, go to the "Application Pools" topic:

["Stop, Start Application Pools"](#)

15.2.1 Unregister Services

Go to the folder `\...Connect3\AppServer\Register` and delete the files **Reg_Log.txt** and **UnReg_Log.txt**.



Launch **Log_UnRegister<Version No.>.bat** by double-clicking it. A window is displayed showing the progress. When finished, the window closes.

15.2.2 Preserve "iPlannerBatchUploadProgram.exe.config"

Locate the **iPlannerBatchUploadProgram.exe.config** file, and copy or move it to a folder other than **bin**.

15.2.3 Extract Files

Right-click on **bin_<Version No.>.ZIP** to display a drop-down menu and click the "Extract Here" option to launch decompression of the files.

15.2.4 Revise "iPlannerBatchUploadProgram.exe.config"

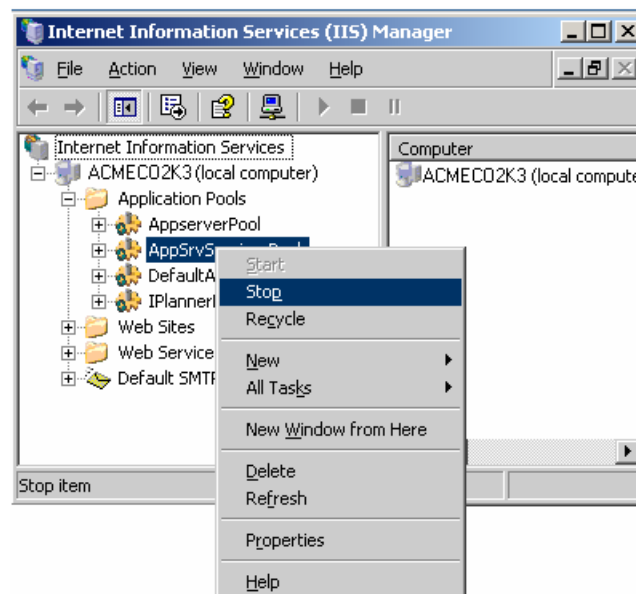
Consult the "Release Notes" or "ReadMe - Technical Bulletin" for the general Connect3 release, and check for changes to the **iPlannerBatchUploadProgram.exe.config** file. Using a simple text editor such as Notepad, open the saved **iPlannerBatchUploadProgram.exe.config** file and modify it to incorporate the described changes, while preserving customized site settings. Copy or move the revised Web.config file to its original location in the **bin** folder, replacing the generic **iPlannerBatchUploadProgram.exe.config** file there that came from the .ZIP update file.

15.2.5 Register Services

Launch **Log_Register<Version No.>.bat** by double-clicking it. A window is displayed showing the progress. When finished, the window closes.

15.3 Stop, Start Application Pools

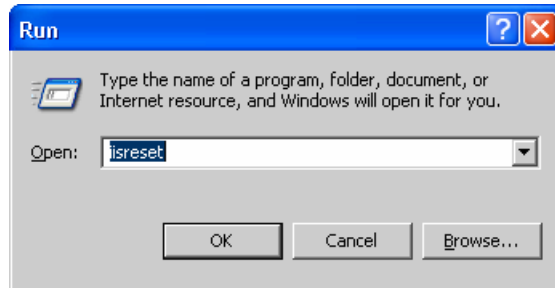
Open Internet Information Services (IIS) and navigate to the "Application Pools" folder under the "local computer" heading. On each entry in this folder, right-click to display a drop-down menu and click the "Stop" choice.



Then, right-click on each entry again to display the drop-down menu and click the "Start" choice.

15.4 IISReset

Click on the Windows **Start** button and click "Run" to display the "Run" window. Enter "iisreset" and click the **OK** button.



A window is displayed showing the progress of stopping and restarting the IIS service. Upon successful restart, the window closes.